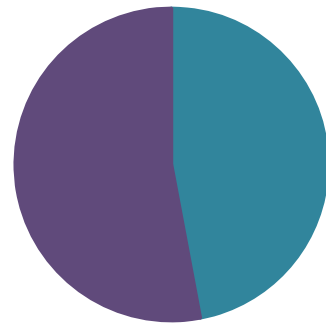


Corporate Parenting

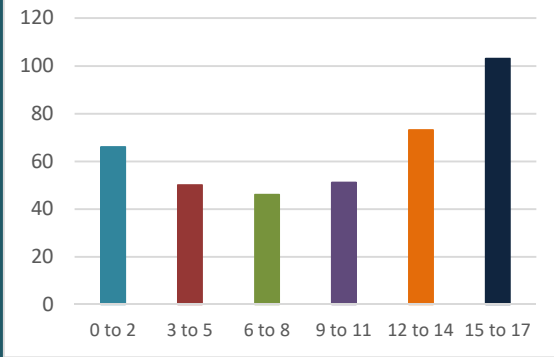
Children in Our Care - 21st February 2022

Gender of Children in Our Care



Female	183	47%
Male	206	53%
Total CIOC	389	

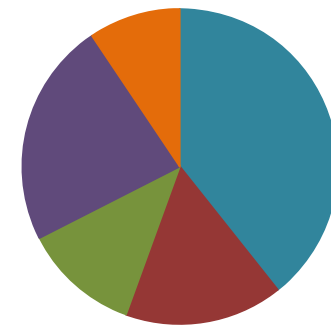
Age Profile of Children in Care



0 to 2	66	9 to 11	51
3 to 5	50	12 to 14	73
6 to 8	46	15 to 17	103

Entering Care Feb 21 to Jan 22

Age of children entering care



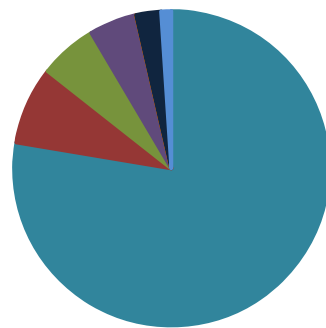
0 to 2	46 (39%)	11 to 15	27 (23%)
3 to 6	19 (16%)	16+	11 (9%)
7 to 10	14 (12%)		

Children in Our Care since 2008

Number of Children in our care since 2008



Ethnicity of Children in Our Care



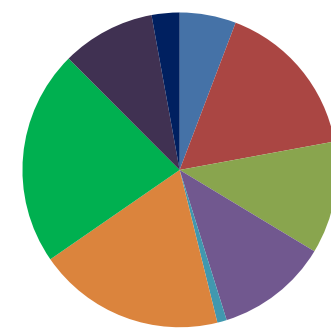
White/UK	302	78%
Asian Pakistani	31	8%
Other	23	6%
Mixed	19	5%
Black	0	0%
White Other	10	3%
Asian Other, incl Indian	4	1%

Where are children in care placed?

Foster Placements (in-house)	130
Foster Placements (agency)	68
Friends & Family	62
Placed with Parents	52
Children's Homes (agency)	24
Res Accom Not Subject to CH Regs	21
Adoptive Placements	16
Other	7
Children's Homes (in-house)	7
NHS	1
Secure	1
Prison/HMYOI	0
Family Centre/Mother and Baby Unit	0
Residential School	0
Independent Living	0

# Children in Our Care with a Disability	24
% Children in Our Care with a Disability	6%

Destinations of Care Leavers



Reached 18	6 (6%)
Returned to parents	17 (16%)
Moved in with relatives	12 (12%)
Other reason	12 (12%)
Child Arrangement Order	1 (1%)
Adopted	20 (19%)
Special guardianship	23 (22%)
Aged 18+ remain current carers	10 (10%)
Independent Living	3 (3%)

Entering/Leaving Care since 2001

	Entering	Leaving	Net
Total in 2001	111	95	16
Total in 2002	103	117	-14
Total in 2003	131	134	-3
Total in 2004	102	104	-2
Total in 2005	119	100	19
Total in 2006	94	104	-10
Total in 2007	97	92	5
Total in 2008	114	104	10
Total in 2009	151	94	57
Total in 2010	112	123	-11
Total in 2011	155	128	27
Total in 2012	125	149	-24
Total in 2013	123	120	3
Total in 2014	89	125	-36
Total in 2015	163	139	24
Total in 2016	170	139	31
Total in 2017	161	143	18
Total in 2018	162	153	9
Total in 2019	155	144	11
Total in 2020	110	134	-24
Total in 2021	117	102	15
Total in 2022	4	8	-4

*Please note this table is calculated by calendar years

CLA as at 31st March

	2020/21	2019/20
CLA as at 31st March	374	411
Male	207 (55%)	228 (55%)
Female	167 (45%)	183 (45%)
0 to 2	57 (15%)	73 (18%)
3 to 5	55 (15%)	63 (15%)
6 to 8	49 (13%)	52 (13%)
9 to 11	43 (11%)	52 (13%)
12 to 14	78 (21%)	77 (19%)
15 to 17	92 (25%)	94 (23%)
White/UK	291 (78%)	327 (80%)
Asian Pakistani	37 (10%)	42 (10%)
Other	15 (4%)	13 (3%)
Mixed	20 (5%)	18 (4%)
Black	0 (0%)	1 (0%)
White Other	5 (1%)	4 (1%)
Asian Other, incl Indian	6 (2%)	6 (2%)

Entering Care / Destinations of Care Leavers

	2020/21	2019/20
Age of children entering care		
0 to 2	39 (44%)	57 (38%)
3 to 6	13 (15%)	35 (23%)
7 to 10	12 (14%)	20 (13%)
11 to 15	20 (23%)	31 (21%)
16+	4 (5%)	8 (5%)
Destinations of Care Leavers		
Reached 18	27 (21%)	34 (24%)
Returned to parents	26 (21%)	32 (23%)
Moved in with relatives	5 (4%)	10 (7%)
Other Reason	14 (11%)	19 (13%)
Child Arrangement Order	2 (2%)	3 (2%)
Adopted	21 (17%)	21 (15%)
Special guardianship	31 (25%)	23 (16%)

*Please note the 2020/21 figures are provisional

Performance compared with national, regional and statistical neighbour averages

	Current - BwD***	Statistical Neighbour*	Regional Average*	National Average*
Number of children in our care (CIOC) per 10,000 0-18 year old population	101	91	97	67
% in foster care	67%	72%	67%	71%
Of which - in-house provider or family and friends approved care	49%			
Of which - Other provider	17%			
% in adoption placements	4%	4%	2%	3%
% in residential/resi schools/secure/other residential provision	14%	14%	14%	15%
% placed at home with parents	13%	10%	13%	7%
Placement Stability (% of CIOC with 3 placements or more in a yr)	11%	8%	8%	9%
Placement Stability (% of CIOC in same placement for past 2 yrs & in care for 2.5 yrs+)	67%	71%	71%	70%
% of Care Leavers aged 19-21 in touch with the LA	95%			
% of Care Leavers aged 19-21 years old in Education, Employment or Training	48%	50%	50%	52%
% of Care Leavers aged 19-21 years old in suitable accommodation	97%	90%	91%	88%
Adoption Scorecard (rolling 3 yrs) - entry into care to adoption placement (days) (A1)	475			
Adoption Scorecard (rolling 3 yrs) - Placement Order to matching (days) (A2)	238			
% of children in our care aged 10-17, in care for over 12 months, who have offended	0.6%			
Number of unaccompanied asylum seekers in care	9			

*Comparable information as at March 2021 **CIOC offending data for Q2 2021/22 only ***Current BwD data as at 21st February 2022